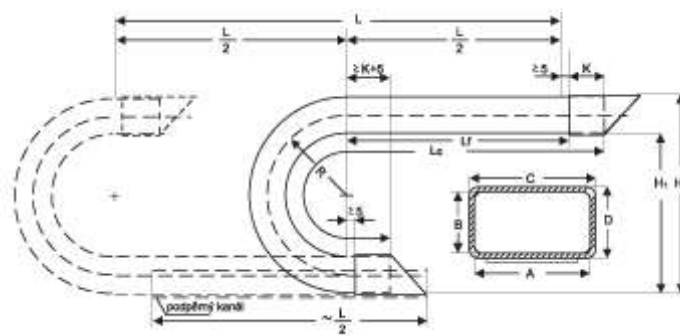


Cable Carriers – Technical information

- A×B** inner dimensions of carrying section
- C×D** outer dimensions of carrying section
- k** depth of embending of carrying section in flange
- R** bend radius
- H1** minimum height of support
- H2** height
- Lf** self-carrying length
- L** elevation length (working length)
- Lc** total length of IDEALFLEX

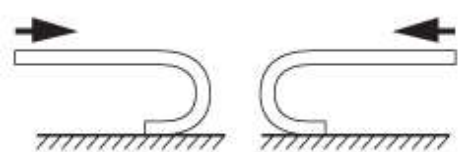


Calculation of IDEALFLEX length:

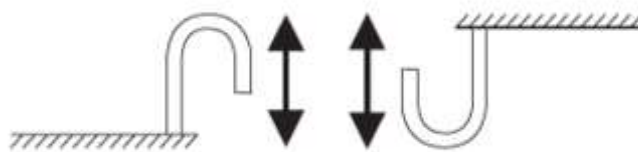
$$L_c = L/2 + R + 2k + 10 \text{ [mm]}$$

| Typ | C | D | A | B | k | R | H1 incl. | H2 preload | Lfmax | L without support | L with support | Carrier weight (kg/m) | Flange weight (kg/pc) |
|------|-----|-----|-----|-----|----|-----|-------------|---------------|-------|-------------------------|----------------------|-----------------------------|-----------------------------|
| 30 | 30 | 20 | 26 | 16 | 25 | 55 | 120 | 144 | 1000 | 2000 | 4000 | 0,6 | 0,05 |
| 50 | 50 | 30 | 43 | 23 | 30 | 72 | 160 | 194 | 1500 | 3000 | 6000 | 1,25 | 0,1 |
| | | | | | | | 110 | 235 | 269 | | | | |
| | | | | | | | 165 | 345 | 379 | | | | |
| 50.1 | 50 | 50 | 45 | 45 | 50 | 110 | 240 | 294 | 2000 | 4000 | 8000 | 1,7 | 0,15 |
| 80 | 80 | 45 | 73 | 38 | 45 | 110 | 240 | 290 | 2000 | 4000 | 8000 | 2,25 | 0,25 |
| | | | | | | | 220 | 460 | 510 | | | | |
| | | | | | | | 275 | 570 | 620 | | | | |
| 85 | 85 | 60 | 80 | 55 | 65 | 165 | 350 | 415 | 2500 | 5000 | 10000 | 2,4 | 0,3 |
| 95 | 95 | 50 | 90 | 45 | 60 | 130 | 280 | 335 | 2000 | 4000 | 8000 | 2,9 | 0,3 |
| 110 | 110 | 60 | 102 | 52 | 60 | 155 | 335 | 400 | 2500 | 5000 | 10000 | 3,6 | 0,5 |
| | | | | | | | 250 | 525 | 590 | | | | |
| | | | | | | | 330 | 685 | 750 | | | | |
| 115 | 115 | 80 | 109 | 74 | 80 | 220 | 465 | 550 | 2500 | 5000 | 10000 | 3,8 | 0,6 |
| 170 | 170 | 80 | 162 | 72 | 80 | 205 | 435 | 520 | 2500 | 5000 | 10000 | 5,6 | 0,85 |
| 175 | 175 | 110 | 167 | 102 | 80 | 285 | 600 | 717 | 2500 | 5000 | 10000 | 5,8 | 1,95 |

Working position of Carrier

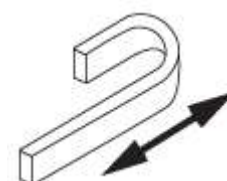


position H



position V

position W

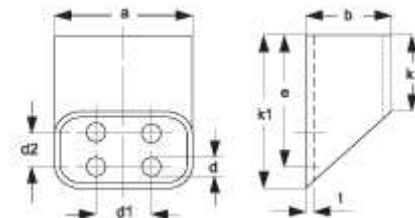


position Z

Flanges

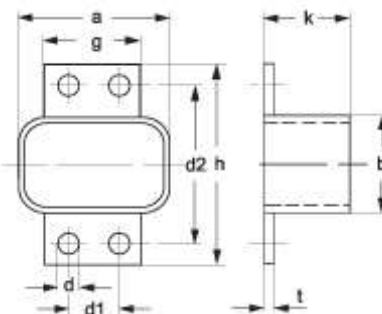
Standard Flanges

| Type | a | b | d1 | d | e | k1 | k | t | d2 |
|------|-----|-----|-----|---|------|-----|----|-----|----|
| 30 | 34 | 24 | 13 | 6 | 40 | 50 | 25 | 1,5 | — |
| 50 | 54 | 34 | 22 | 7 | 45 | 60 | 30 | 1,5 | — |
| 50.1 | 54 | 54 | 20 | 7 | 75 | 100 | 50 | 1,5 | — |
| 80 | 85 | 50 | 50 | 7 | 67,5 | 90 | 45 | 2 | — |
| 85 | 90 | 65 | 50 | 7 | 118 | 130 | 65 | 2 | 40 |
| 95 | 100 | 55 | 50 | 7 | 110 | 120 | 60 | 2 | 40 |
| 110 | 115 | 65 | 70 | 9 | 90 | 120 | 60 | 2 | — |
| 115 | 120 | 85 | 80 | 9 | 143 | 165 | 80 | 2 | 40 |
| 170 | 175 | 85 | 100 | 9 | 120 | 180 | 80 | 2 | — |
| 175 | 182 | 117 | 140 | 9 | 158 | 195 | 80 | 3 | 40 |



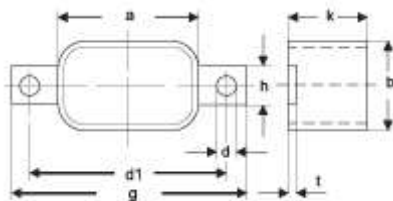
Flange – X type

| Type | a | b | d1 | d | g | h | d2 | k | t |
|------|-----|----|----|---|-----|-----|-----|----|-----|
| 50 | 54 | 34 | 18 | 7 | 35 | 70 | 55 | 30 | 1,5 |
| 80 | 85 | 50 | 45 | 7 | 65 | 85 | 70 | 45 | 2 |
| 110 | 115 | 65 | 60 | 9 | 80 | 110 | 90 | 60 | 2 |
| 170 | 175 | 85 | 95 | 9 | 120 | 130 | 110 | 80 | 2 |



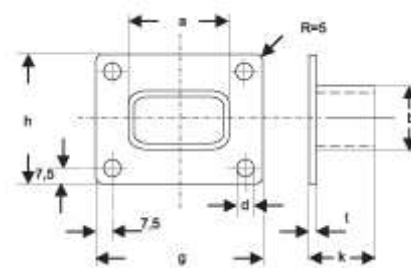
Flange – Y type

| Type | a | b | d1 | d | g | h | k | t |
|------|-----|----|-----|---|-----|----|----|-----|
| 50 | 54 | 34 | 75 | 7 | 90 | 15 | 30 | 1,5 |
| 80 | 85 | 50 | 105 | 7 | 120 | 30 | 45 | 2 |
| 110 | 115 | 65 | 140 | 9 | 160 | 35 | 60 | 2 |
| 170 | 175 | 85 | 200 | 9 | 220 | 40 | 80 | 2 |



Flange – Z type

| Type | a | b | d | g | h | k | t |
|------|-----|-----|---|-----|-----|----|-----|
| 30 | 34 | 24 | 6 | 60 | 50 | 25 | 1,5 |
| 50.1 | 54 | 54 | 7 | 85 | 85 | 50 | 1,5 |
| 85 | 90 | 65 | 7 | 120 | 95 | 65 | 2 |
| 95 | 100 | 55 | 7 | 130 | 85 | 60 | 2 |
| 115 | 120 | 85 | 9 | 150 | 115 | 80 | 2 |
| 175 | 182 | 117 | 9 | 210 | 145 | 80 | 3 |



Mounting techniques of standard flanges

